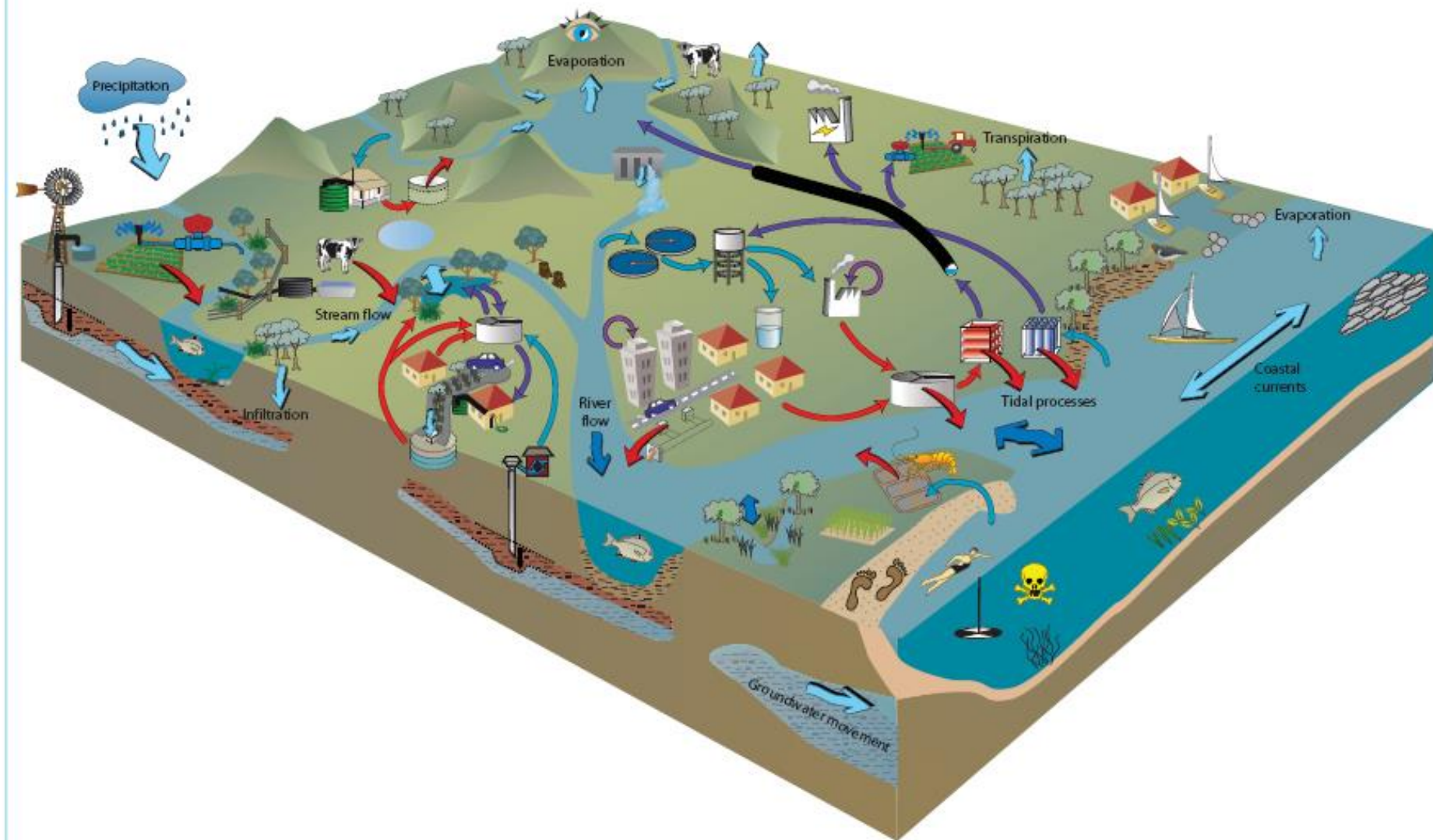


# Sustainable Water Usage Brisbane Australia

Mark Pascoe – Professor of Practice, International WaterCentre, Griffith University

**2020 Taipei International Water  
Environment Forum**

# Integrated Water Management

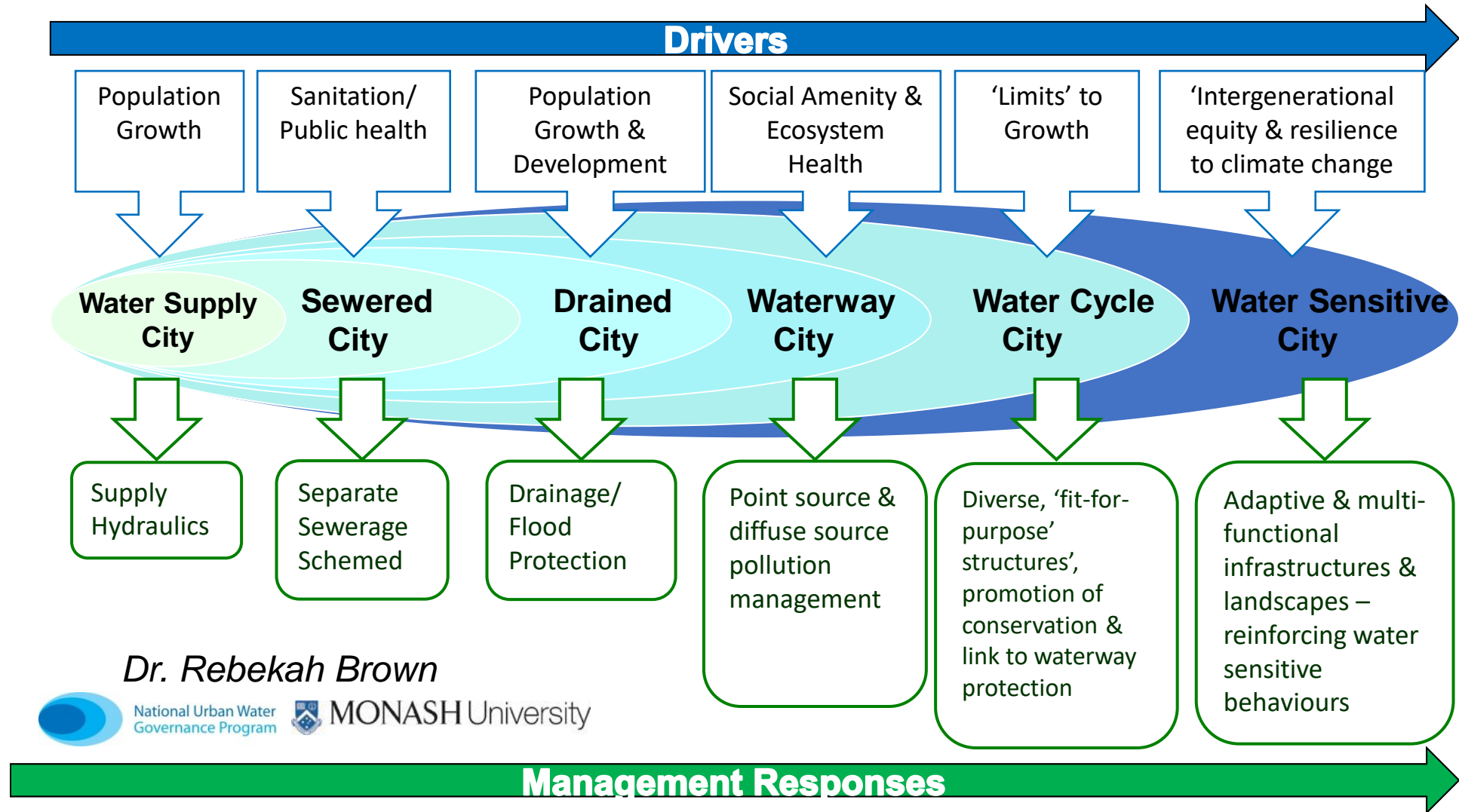


# "Australia the land of drought and flooding rain"



Wivenhoe Dam  
2007 and 2011

# Sustainable Cities=Water-sensitive Cities



*Dr. Rebekah Brown*

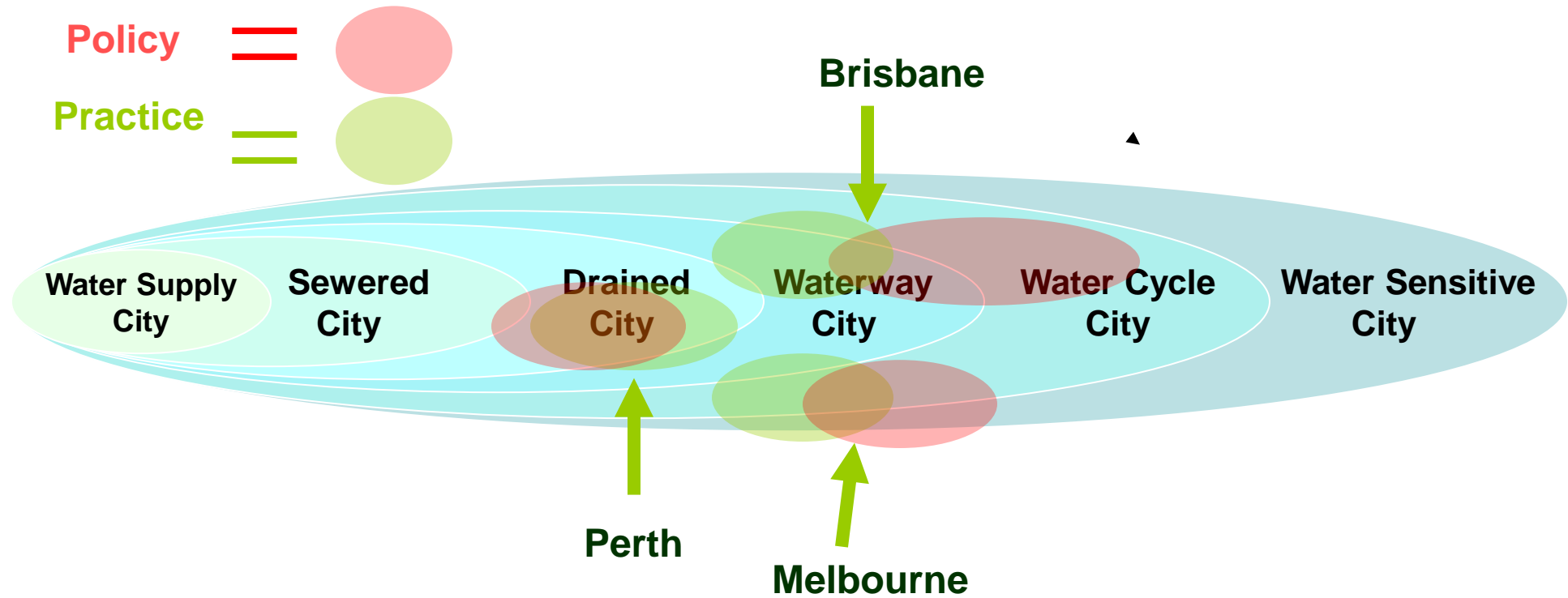


National Urban Water  
Governance Program



MONASH University

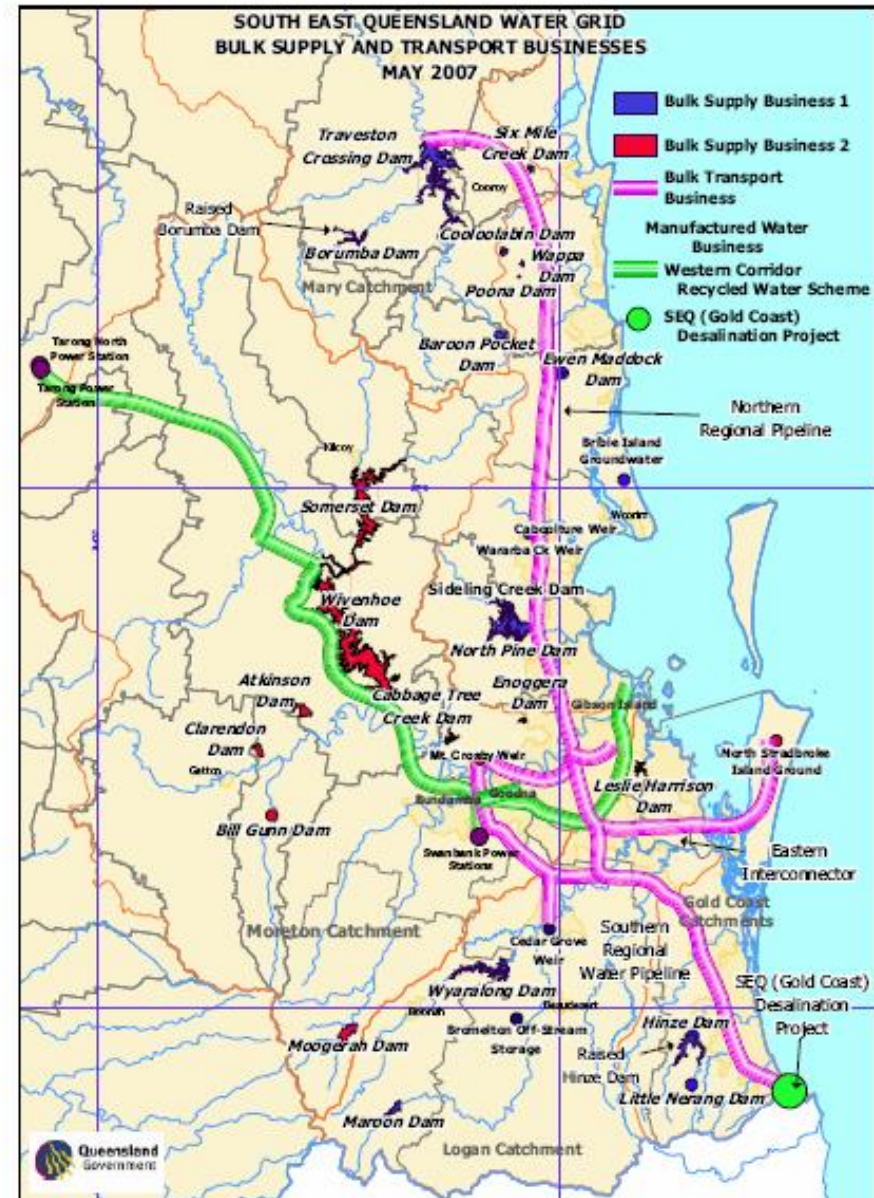
Challenge: *Policy and Practices for transition phases occur at different times*

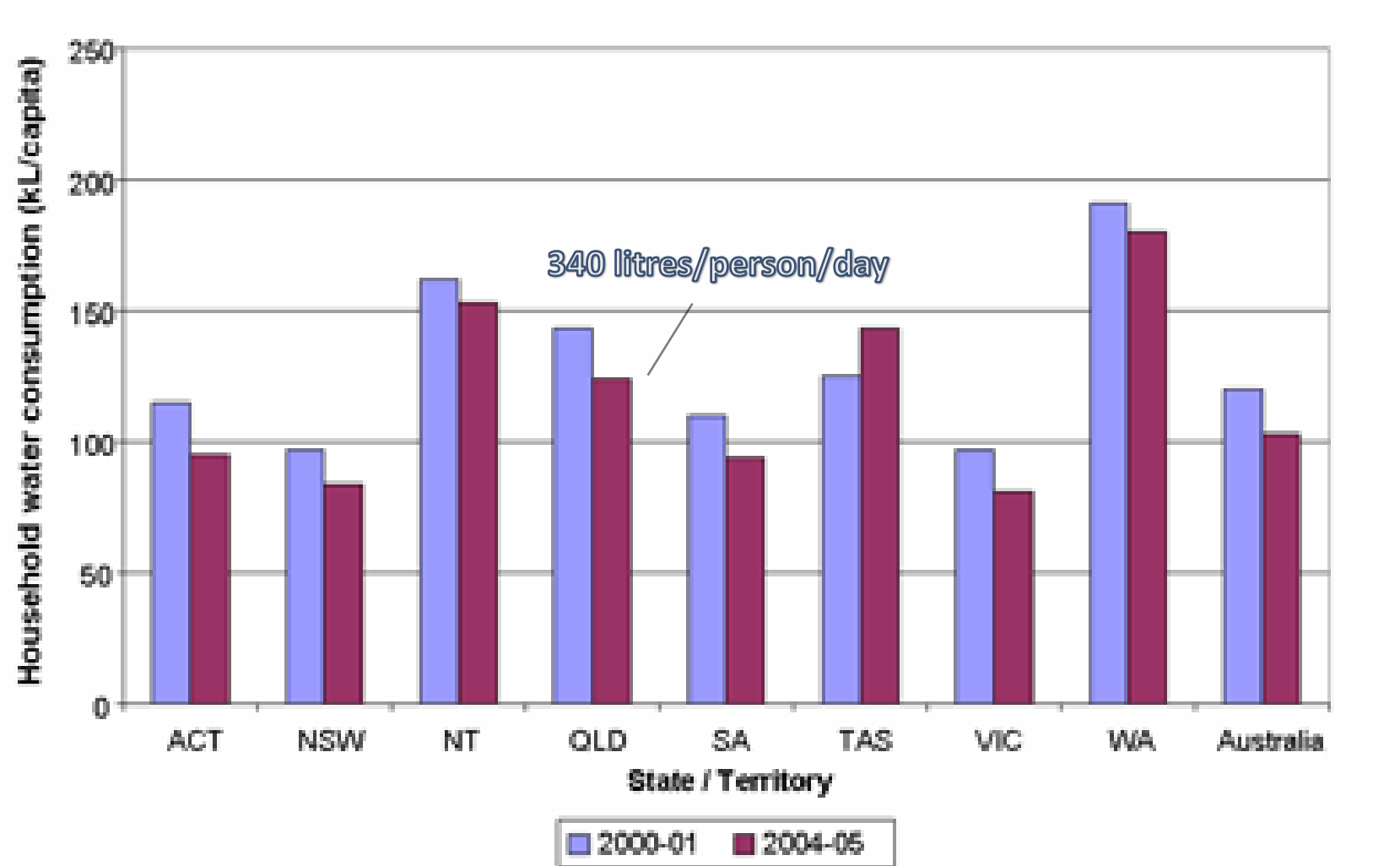




# Western Corridor Scheme

- The reaction....







WE'VE MOVED FROM TARGET 140...

## TARGET 170

AND HIGH LEVEL RESTRICTIONS START 31 JULY

[READ MORE](#)

**TARGET 140 TIPS**

Wash your hands in a plugged sink. More tips...

**41.69 %**

Combined dam water levels for SE QLD for 18 September [More information](#)

**TAKE THE TARGET 140 TEST**

- Water Usage Survey
- Work out your water savings



## THANK YOU

FOR THE BEST YEAR ON RECORD

### We're now at Target 170

Dam levels have risen above 40% and High level restrictions and Target 170 *if* now apply. Residents can use a little more water, but only if they need to.

[Read more about High level restrictions \*if\*](#)

This site still contains useful water saving tips for conserving water inside the home. Our outdoor pages contain updated information which now applies under Target 170.

### Latest News

- SEP 18** Fine weather bumps up water use
- SEP 17** World's best in Water
- SEP 11** Residents rally and drive down water consumption

[More media releases](#)

### How to read your water meter

We all need to take responsibility for how much water we use each day.

A good starting place is to find out how much you use at the moment – read your water meter or read your water advice notice from your council.

Three steps to read your water meter

**3 STEPS**



[Home](#)[About QWC](#)[Our water](#)[Projects & planning](#)[Water restrictions](#)[Target 140](#)[For Business](#)[Purified Recycled Water](#)[FAQs, info & resources](#)[Media centre](#)[Jobs](#)

"I'm doing loads less  
to help save water"

Read more about what you can do



SEQ urban water  
supply arrangements  
report released

**TARGET 140**

Mobile commercial  
operators: **Water  
Efficient Operator**  
& guidelines

For Business:  
**Water Efficiency  
Management Plans  
& Assessors**

## Securing our water, together

Read more [about the Queensland Water Commission](#)

## Level 5 fact sheet in 14 languages

A useful summary of Level 5 water restrictions is now available in our fact sheet which has been translated into 14 non-English languages. [Click here for more information.](#)

## Latest News

28 Aug 2007 [Water Carriers Restriction](#)

27 Aug 2007 [Recycled water starts pumping to industry: Beattie](#)

24 Aug 2007 [Water use hits new low](#)

24 Aug 2007 [Rain finally falls on dams](#)

[RSS](#) [Subscribe to RSS](#)

Read more from our [Media centre ...](#)

**20.13%**

Combined dam water levels for  
SE QLD - 29 August

[More info ...](#)

### Individual Daily Water Use



■ Level 5 daily usage target  
■ Current daily usage

**Well done! We've beat our  
140 litre target. Keep up the  
good work.**

This is a webpage snapshot as it app

**30 AUG**  
2007  
13:14

[View the live webpage](#)

# Today - 2020



**DAM LEVELS** as at 4:10am, 17 September 2020

## Profile Question:



How do you water your lawn?

Why are you asking me this question?

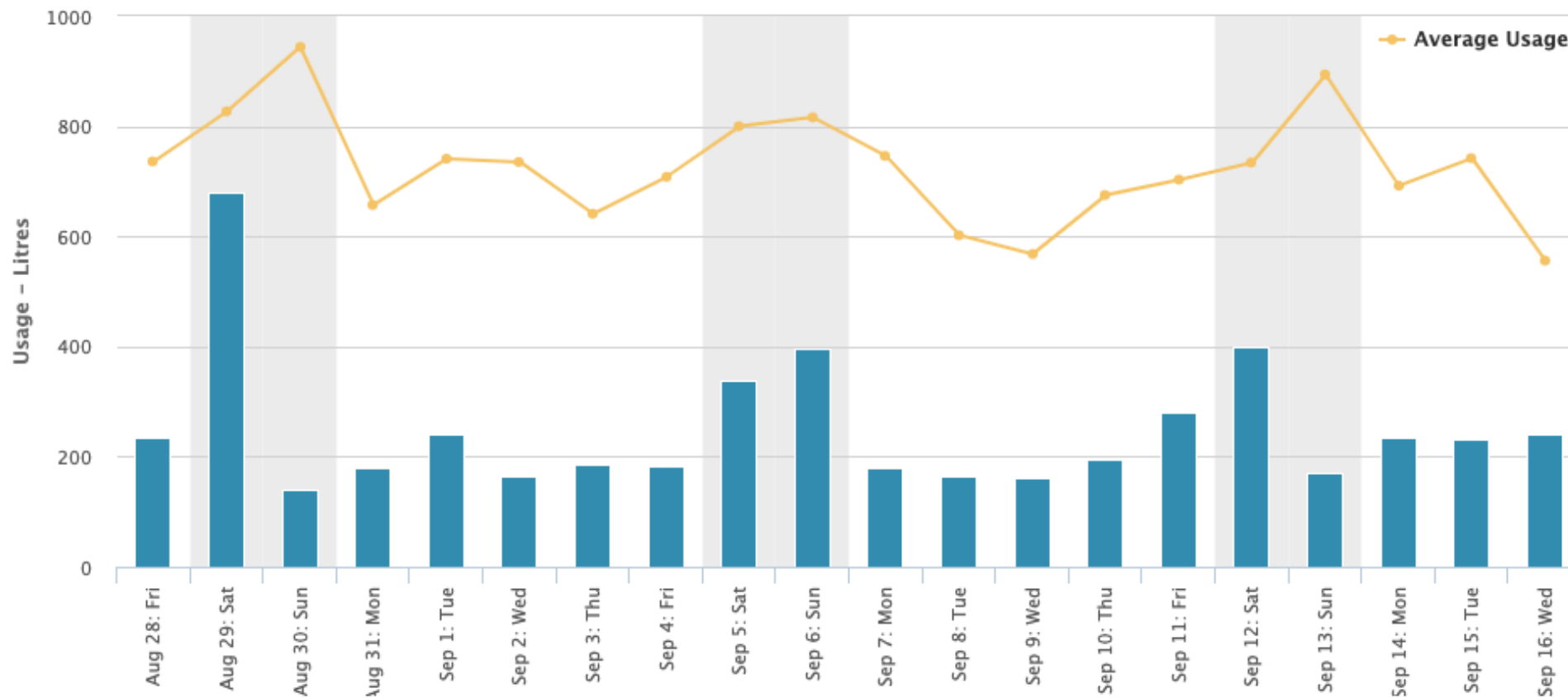
Save

Skip →

## Water Consumption:

## Water Usage - Litres

Friday: 28 August 2020 - Wednesday: 16 September 2020



Report Type: ?

Water Usage



Comparison: ?

Similar Properties



Period: ?

Daily



From: ?

28/08/2020



To:

16/09/2020



## myh2o Detailed Property View

[Operations](#)

### Property Information:

**22 Vacluse Crescent**

EAST MACKAY 4740

Assessment: 56599



Your Profile

### Water Meters:

13W101206



00860 - - -



### Metrics:

### 7-Day Average Consumption:

You:



**239** L per day 

vs

East Mackay:

**749** L per day 

1 2 3 4 5 6

### Profile Question:



How do you water your lawn?

Why are you asking me this question?

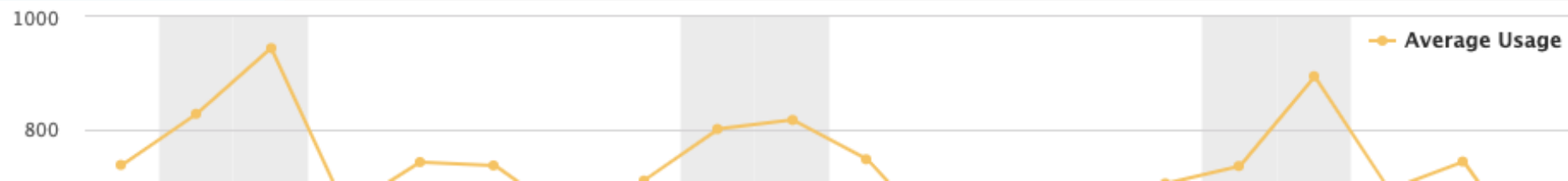
 Save

Skip 

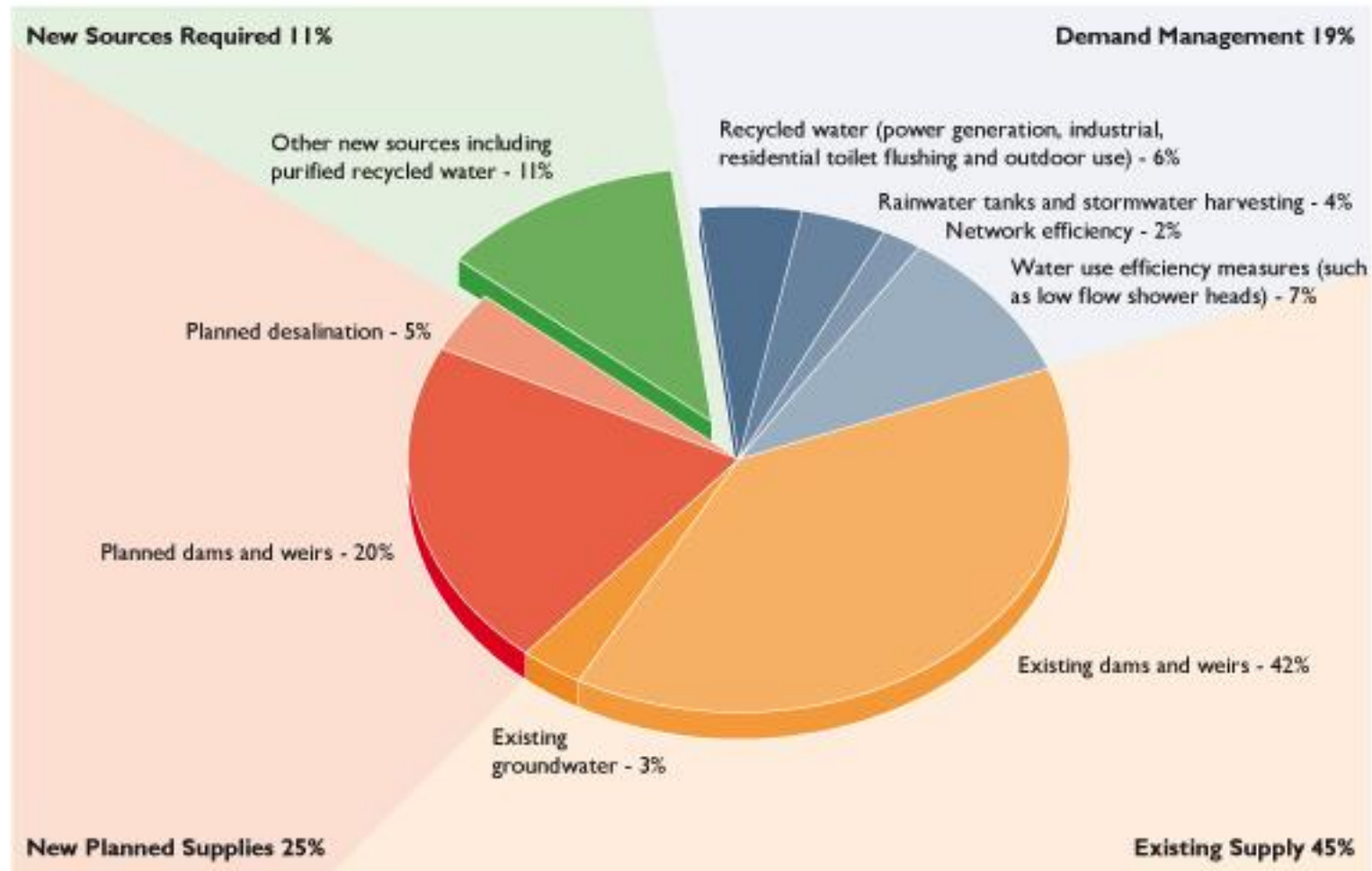
### Water Consumption:

### Water Usage - Litres

Friday: 28 August 2020 - Wednesday: 16 September 2020



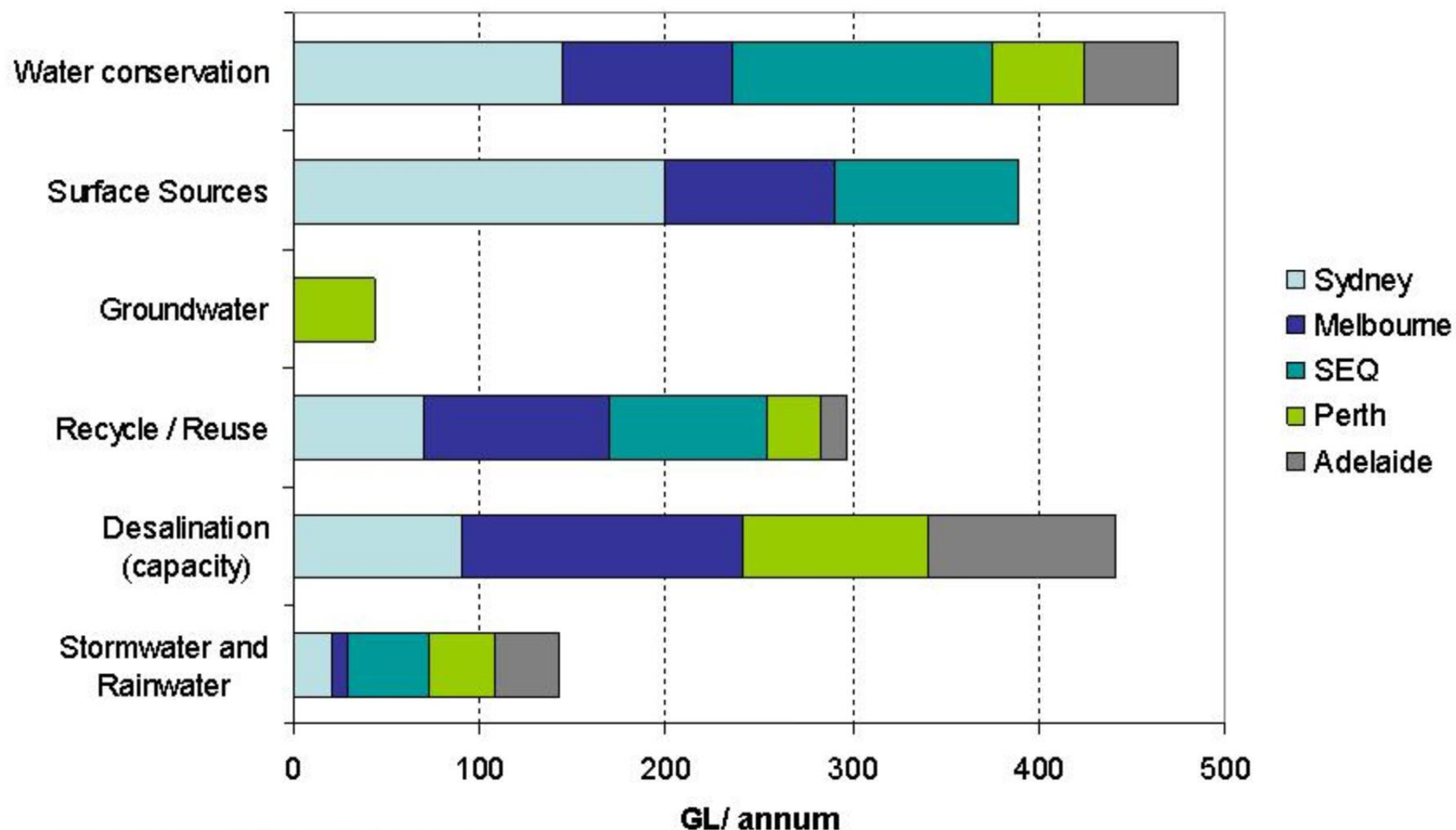
**Long-term water balance 2050 – (medium series population, no climate change)**





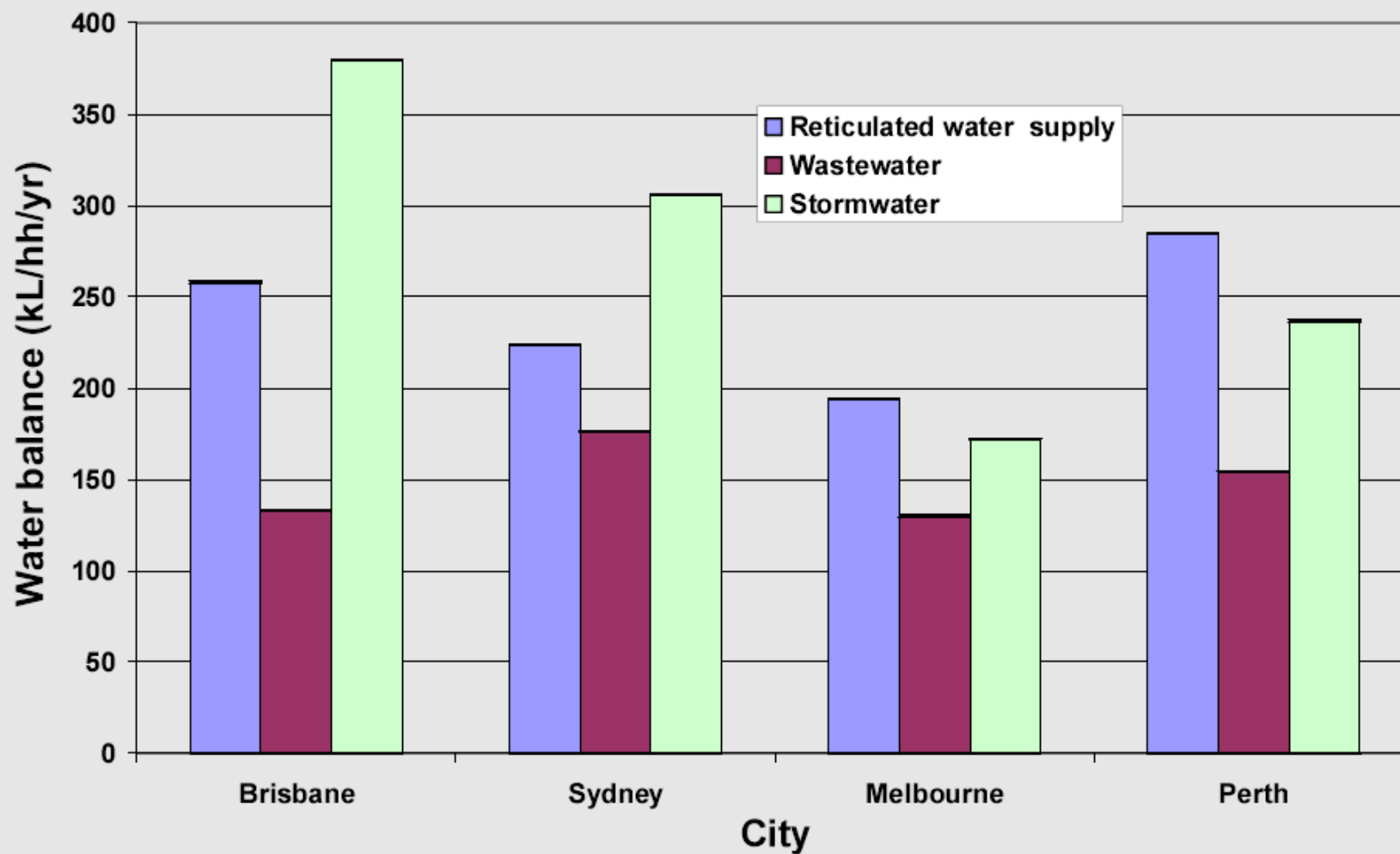
# Current capital city water strategies

## Planned additional sources of water to 2030



Total 1,600 GL/year

**Chart 8: Average annual water balances from households  
(Brisbane, Sydney, Melbourne, Perth)**



# Luggage Point AWTP





# Microfiltration





# Reverse Osmosis





# Desalination Plant – RO Membranes

